

KelseyCare  
Advantage  
★★★★

# Weathering the Storm



Hurricanes are large, whirling storms with winds of at least 74 mph that form over tropical or subtropical waters. As hurricanes move over land, these violent storms can deeply impact homes, families, and communities. Hurricane season lasts from June 1 to November 30 each year.



# BE READY!

Prepare yourself, your family, and your home for the upcoming hurricane season.

## Have a Plan

Stay informed through your local news, weather stations, social media, etc., and make a plan to either evacuate or stay. If officials call for an evacuation, go. Keep in mind your physical and medical needs when considering your options. Also, talk to those who may be a support system for you—a family member, neighbor, friend, or community volunteers. Other ways to prepare:

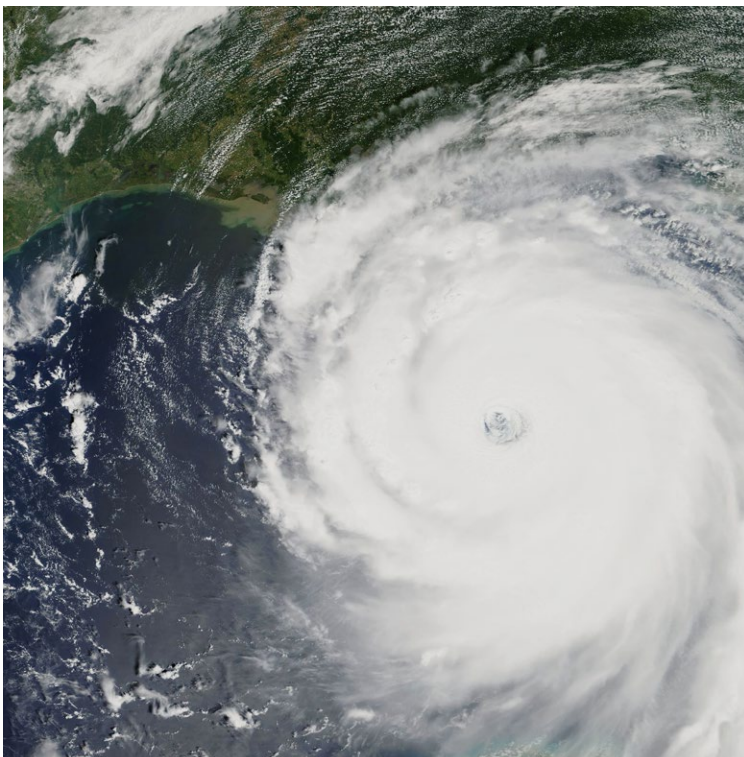
- Sign up for emergency alerts
- Update your address here: [kelseycareadvantage.com/members/member-forms/update-your-address](https://kelseycareadvantage.com/members/member-forms/update-your-address)
- Know your evacuation route
- Secure your home, flood, or renter's insurance early
- Build an Emergency Kit
- Prepare your home for harsh weather
- If you have pets, make a plan for them as well

## Secure Your Medical Needs

- Maintain a 30-day supply of medications
- If medicine must stay cold, consider how to store it
- Identify medical equipment that must stay charged (CPAP, pumps, etc.) and have a back-up device if possible
- Keep medical records safe and easily accessible, including your KelseyCare Advantage Member ID card
- Have a list of emergency contacts
- Have a list of medications and allergies
- Talk with your care team about your preparations to ensure you're ready

## Your Emergency Kit *(list is not exhaustive)*

- Gallons of water
- Non-perishable food (consider any special dietary needs)
- Medications
- Flashlights
- Batteries, batteries, batteries!
- Battery-powered radio
- Cell phones with extra chargers
- Changes of clothes
- Cash
- First aid supplies (band-aids, sanitizer, ointment, etc.)
- Whistle to call for help
- Personal documents (medical, financial)
- Pet supplies
- N95 masks
- Sleeping bags, blankets



## Update Your Contact Information

Prior to large storms, visit our website and make sure we have your current address. Update your address at [kelseycareadvantage.com/members/member-forms/update-your-address](https://kelseycareadvantage.com/members/member-forms/update-your-address). You will need your KCA ID number located on the front of your ID card.

### Need to Change Your Address?

We want to make sure we have the most up-to-date mailing address on file for our members so that you receive important plan information. Please take a minute to update your address using the form below.

Thank you in advance for your help!

First Name	Last Name
<input type="text"/>	<input type="text"/>
Current Residential Address	City
<input type="text"/> <small>P.O. Boxes are not allowed</small>	<input type="text"/>
State	ZIP Code
<input type="text"/> TX	<input type="text"/>
KCA Member ID	Email Address
<input type="text"/>	<input type="text"/>

☐ Yes, I would also like to receive my Medicare plan documents electronically.

☐ I attest that I am a member of KelseyCare Advantage. I declare under penalty of perjury that all statements made using this form regarding my address are true and complete to the best of my knowledge.

## Local Resources

For more detailed information on hurricane preparedness, call 2-1-1 or visit the following sites:

- [redcross.org](https://redcross.org)
- [h-gac.com/area-agency-on-aging/](https://h-gac.com/area-agency-on-aging/)
- [ready.gov](https://ready.gov)
- [readyharris.org](https://readyharris.org)
- [unitedwayhouston.org](https://unitedwayhouston.org)
- [fema.gov](https://fema.gov)

Sign up for email and text alerts through both your local emergency management department and Emergency Alerts ([ready.gov/alerts](https://ready.gov/alerts)).

If you have a smart phone or device, you can also download the free Red Cross Emergency app.

# KelseyCare Advantage

★★★★★

713-442-4878 (TTY: 711)

KelseyCare Advantage, a product of KS Plan Administrators, LLC, is an HMO and POS Medicare Advantage plan with a Medicare contract. Enrollment in KelseyCare Advantage depends on contract renewal. Hours are 8:00 a.m. to 8:00 p.m. local time, seven days a week, from October 1 – March 31. From April 1 – September 30, Monday through Friday, hours are 8:00 a.m. to 8:00 p.m. local time. Messaging service used weekends, after hours, and on federal holidays. KelseyCare Advantage, 11511 Shadow Creek Parkway, Pearland, TX 77584

© 2025 KelseyCare Advantage. All rights reserved.

H0332\_HURPREP25\_C

